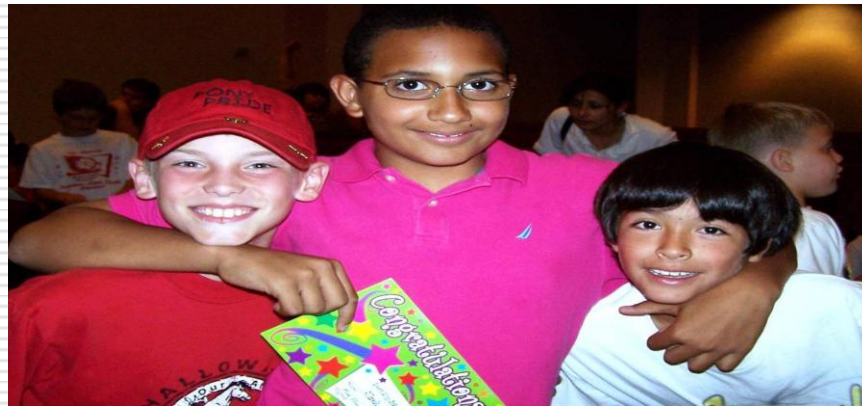

Reaching the 21st Century Student



Mandy Green, MS, LPC-S
Alief ISD
CTE Counselor

Our Students: What Do We Need to Know?

- ❑ Social/Personality Development
- ❑ Moral Development
- ❑ Mental Development
- ❑ Influences



21st Century Trends

- ❑ Generational Trends
- ❑ Family Dynamics
- ❑ Societal Shifts
- ❑ Technology Trends



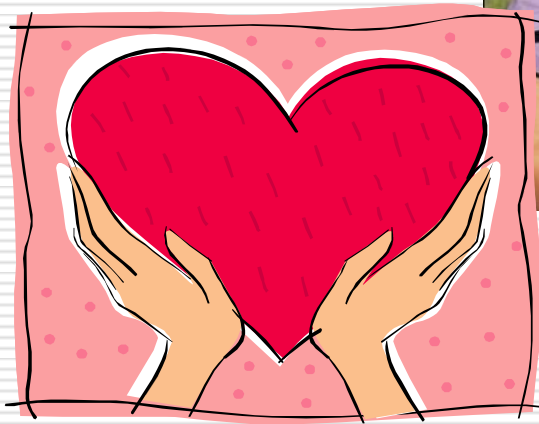
How Do We Engage Students?

- ❑ 20th Century Techniques
- ❑ 21st Century Techniques



What Others Say...

- Daggett
- Glasser



How Can CTE Help Achieve Engagement?





The End



Questions???????

