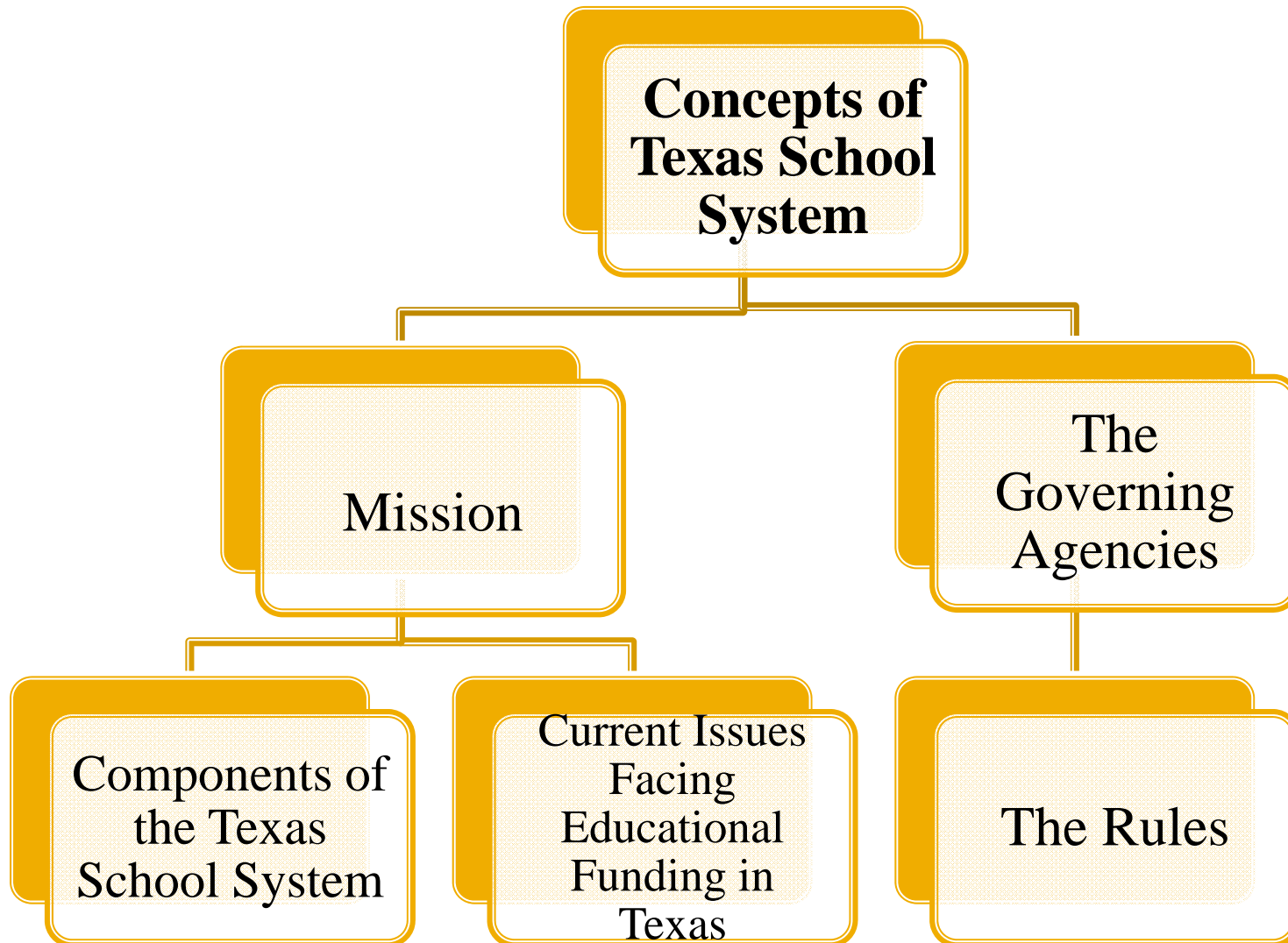


Social Dimensions : A Closer Look at Public Education



Social Dimensions :


A Closer Look at Public Education




Mission

The Texas Public Education System

Ensures that all Texas children have access to a quality education

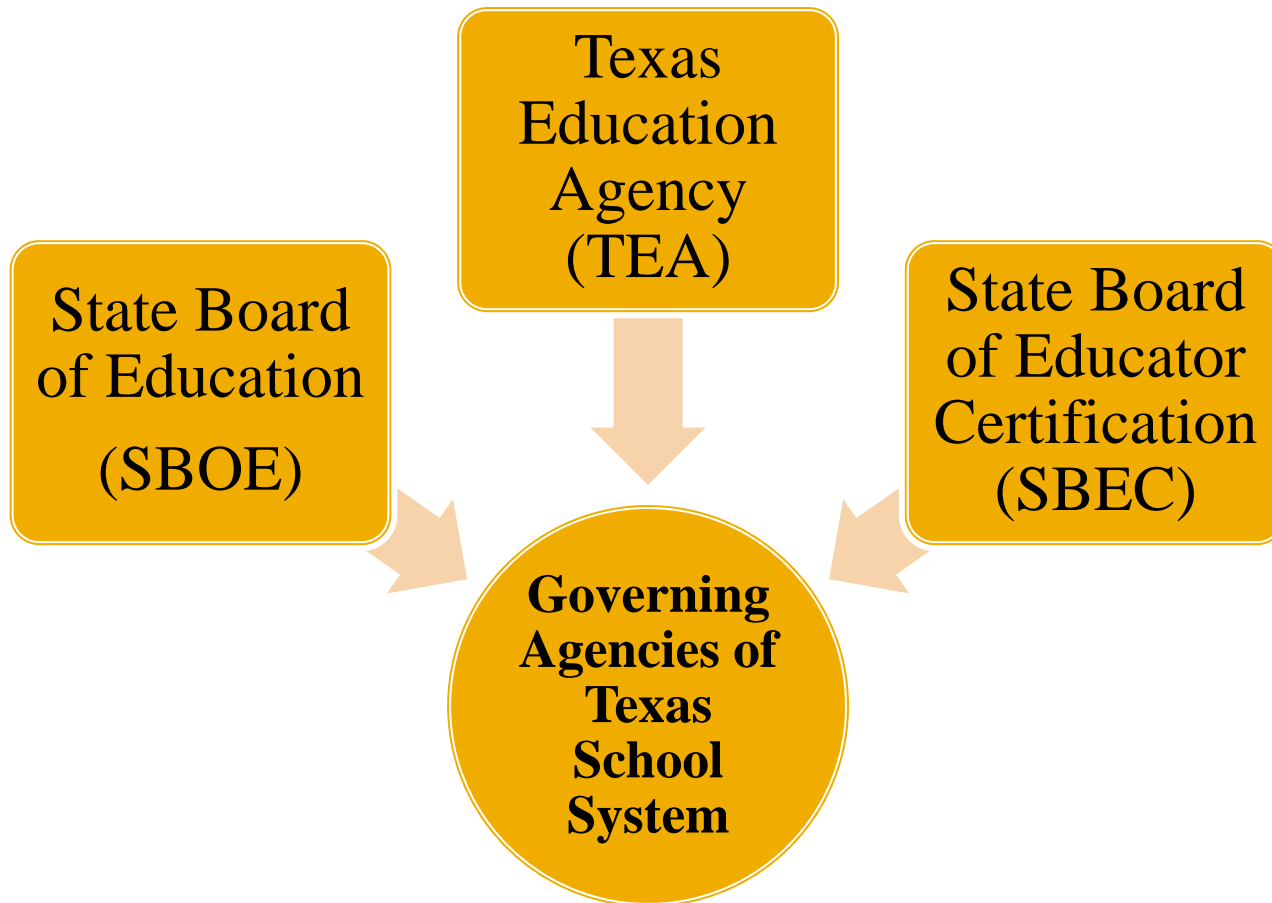


Ensures each individual student achieves their potential



Every student fully participates now and in the future in the social, economic and educational opportunities of our state and nation.¹

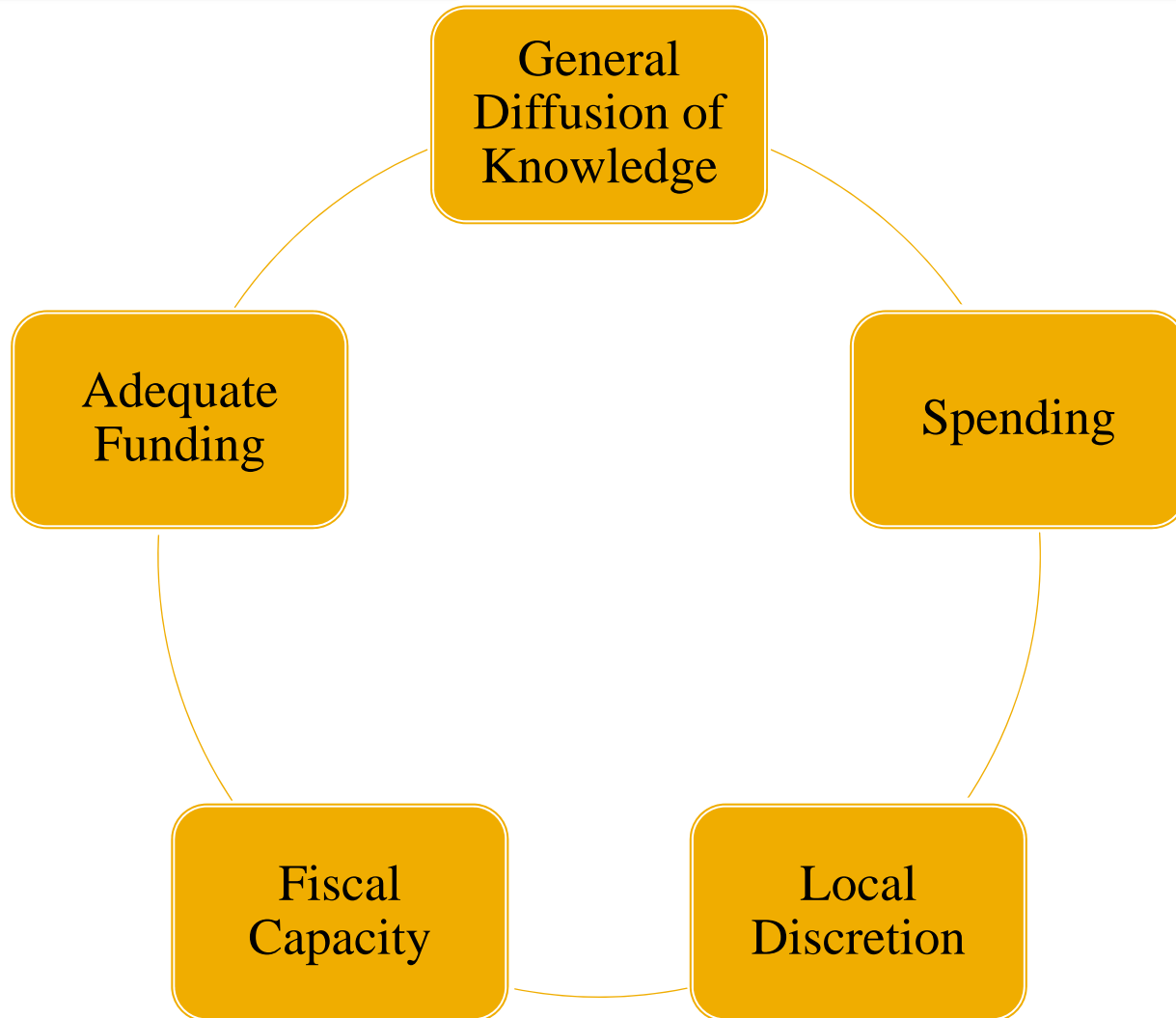
The Governing Agencies



Components of the Texas School System

- Governance
- Finance
- Human Resources
- Data and Information Management Systems
- Curriculum, Instruction, and Assessment
- Technology Infrastructure and Integration
- Maintenance and Operations

Current Issues Facing Educational Funding in Texas



The Rules

